



# Royal Sydney Yacht Squadron Membership Prospectus





# Welcome,

On behalf of the Royal Sydney Yacht Squadron, I would like to thank you for your expression of interest in becoming a Member of our Club.

Since 1862, we have attracted a diverse community of Members who share a common interest in the sport of sailing and in enjoying world class facilities both on-water and ashore.

This sense of community is one of the key pillars in our Club's mission and what distinguishes RSY from other yacht clubs around Australia. Our passion for promoting the sport of sailing, encouraging Members' usage of the Club and fostering the Member for Life philosophy are also key aspects of the Club's mission.

I have had the privilege of being part of our Club's community for over 25 years and enjoyed almost every offering available including the youth performance programs, competitive one-design Saturday racing, fabulous dining and cellar facilities, and the amazing networking opportunities within our wider Membership.

I have also had the opportunity to introduce my family and children to the Club over the last few years through the various discover sailing courses and family friendly social events.

I hope that you find this prospectus useful and that it provides you with an insight into the opportunities available to our Members. If you have any additional questions, please reach out to a membership representative using the contact information provided.

I look forward to welcoming you to our Club as Member soon.

Christian Brook

**RSYS Commodore**





# Our History

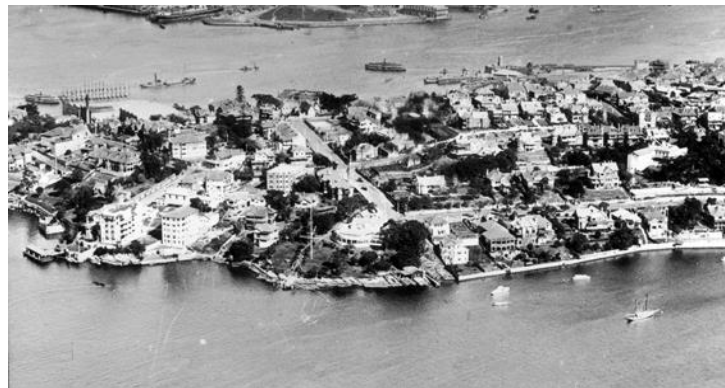
On the 8<sup>th</sup> of July 1862, William Walker and eighteen prominent Sydney yachtsmen signed the Club's foundation document, starting the Royal Sydney Yacht Squadron's grand journey to becoming one of the world's leading yacht clubs.

Since our inauguration, the Club has noted many exceptional achievements both on-and-off the water including multiple challenges for the Admiral and America's Cups, active participation in major ocean racing events, cultivation and support of numerous Olympians and hosting of multiple major Olympic, world and

national championship events.

These achievements have been complemented by significant development to our Club facilities including the enlargement of the historic Carabella clubhouse and waterfront facilities. These developments have focused on catering to the evolving needs and interests of our Members.

More information: [Click Here](#)





# Our Flag Officers

The Royal Sydney Yacht Squadron is led by our General Committee in conjunction with our management team. The General Committee is composed of five Flag Officers and four additional Members hailing from a range of sailing and corporate backgrounds.

The General Committee have a responsibility to our Members for the policies, strategic direction, effect

oversight and governance of the business and affairs of our Club. In carrying out its responsibilities, the Committee considers both the interests of our Members as a whole and the broader community inline with our mission of promoting and supporting the sport of sailing.

More information: [Click Here](#)

## RSYS Flag Officers (2021 –2024)



**Commodore**  
Christian Brook



**Vice Commodore**  
Russell Taylor



**Rear Commodore**  
Karyn Gojnich



**Captain**  
Michael Lindsay



**Honorary Treasurer**  
Ross Littlewood



# Club Facilities

Our historic Clubhouse and grounds provide a friendly base from which our Members can enjoy the beautiful Sydney Harbour from both on-water and ashore.

Within the Clubhouse, our Members enjoy world class dining options everyday of the week at one of our two restaurants, professional corporate facilities and event rooms capable of comfortably hosting over 150 guests.

On-water, our Members have access to the 'Pond' a quick access dock, the Club's fleet of Elliott 7s sports boats and stand-up paddle boards. Members also have access to the Waterfront boatshed that offers Members discounted yacht repair services and storage facilities.

More information: [Click Here](#)







# Club Sailing

As one of Australia's premier yacht clubs, RSYs offers a wide range of racing and sailing opportunities year-round.

During the summer season, our Sailing Department organises an extensive inshore racing program including weekly twilight racing on Tuesday, Friday and Sunday evenings, one-design mini-regattas on Saturdays and a Spring/Summer handicap series for larger yachts. The

Club also caters for the growing interest in offshore racing with events such as the Short Ocean Pointscore series including the historic Gascoigne Cup.

During the winter season, the Club continues to offer a range of sailing opportunities for both yachts and one-design boats.

More information: [Click Here](#)





# Sailing Academy

Established in 1960, the mission of the RSY Sailing Academy is to foster and promote sailing within the greater community and to support our Members throughout their sailing journey.

Since its inception, the Academy has supported thousands of sailors through our Discover Sailing and performance training programs, including senior RSY Flag Officers, Olympians, America's Cup champions and World Champions.

In addition to providing world class training opportunities, the RSY Sailing Academy also places a significant emphasis on developing a sense of community that helps attract and retain Members for life. Our community engagement initiatives range from experience days on Members' yachts, to Youth Sailing social functions, all designed to help connect sailors from the different programs offered.

More information: [Click Here](#)







# Waterfront Facilities

Offering a comprehensive list of services including daily tender service, 18-tonne travel lift, hardstand storage, private moorings and fuel dock, our Waterfront facilities are designed to support our sailors with all their yachting needs.

Our in-house services are complemented by a range of onsite contractors including shipwrights, riggers, painters, marine mechanics, engineers and electricians.

All our services are fully compliant with EPA and NSW RMS environmental impact policies and the Waterfront has recently invested in further reducing the impact of our operations.

Our Club also holds several moorings in Pittwater available to Members cruising the northern waterways.

More information: [Click Here](#)







# Events & Functions

Our historic Clubhouse acts as one of Sydney's most beautiful venues for both grand and intimate events with almost every room offering unrivalled views down Sydney Harbour.

Paired with our experienced team of event coordinators, award winning Chefs and silver service staff the Squadron can guarantee a world-class experience at every event.

In addition to our grand dining room, Members can host events on our rooftop terraces, pristine lawns, and in our intimate cellar dining room or casual Careening Cove Anchorage restaurant area.

More information: [Click Here](#)





# Cruising Opportunities

A unique and welcoming community within the greater Membership, the RSYS Cruising Division offers sailors a diverse program of short weekend cruises, monthly presentation nights and co-host the annual Squadron Cruise.

Open to both experienced and novice cruisers, the division's monthly presentation nights cover of practical topics such as engine maintenance, rigging and

navigation, alongside tales of grand adventures from both Members and guest speakers.

On-water the short weekend cruises and annual Squadron cruise provide a great opportunity for our Members to explore the local water-ways and prepare for adventures abroad.

More information: [Click Here](#)





# Discover Sailing

As an Australian Sailing accredited training centre, the RSYS Sailing Academy offers Members several Discover Sailing programs for kids, teens and adults.

The Tacker's Program is the first step in every kid's sailing journey and is open to sailors aged 7 – 12 years old. This program is run throughout the year and offers quarterly holiday camps.

The OutThere Teenager Holiday camps are specifically designed for teens interested in getting on the water. These camps are a great opportunity for sailors to try keelboats and explore Sydney Harbour with their friends.

The Adult Discover Sailing courses cater for a wide range of experience levels and use the Club's keelboat and dinghy fleets.

More information: [Click Here](#)







# Weddings and Celebrations

Celebrate your engagement and wedding on the Squadron grounds with unrivalled views across Sydney Harbour. Our experienced team of event managers and award-winning catering staff will support you at every step of the journey and ensure you have an unforgettable experience.

Our venues include a grand ballroom, atmospheric dining room, beautiful outdoor terraces with alfresco dining

options and gracious manicured lawns that lead down to the Harbour's edge.

More information: [Click Here](#)





# Fort Denison Cellar

Nestled within the RSYS Clubhouse is the Fort Denison Cellar, one of Sydney's best boutique cellars.

Awarded the three Goblets accolade for ten consecutive years by the Gourmet Traveler Magazine, our cellar offer's a unique selection of hand-picked wines and spirits from around the world and world class service from our expert staff.

In addition to our amazing collection, the Fort Denison Cellar regularly hosts exclusive Member only dinners, tasting experiences and Masterclasses.

More information: [Click Here](#)





# Membership

Over the last 160 years, our diverse community has grown to a community of 3,000 Members who regularly attend the Club for a variety of sailing and onshore activities.

Our membership is categorised into six groups based on age, location and affiliation.

- Metropolitan (40 years and over)
- Youth (5 – 17 years or Family Membership)
- Intermediate (18 to 39 years)

- Country (Usual place of residence, per electoral roll, more than 100km radius from Kirribilli)
- Absentee (place of residence outside Australia)
- Affiliate (Family Membership)

Each cohort receives different benefits and level of access to the Club. These benefits and access levels are highlighted in the next four pages.

More information: [Click Here](#)







# Membership Benefits

	Metropolitan	Intermediate			Country	Absentee	Family		Youth (5 – 17)
		A (18-24)	B (25-29)	C (30-3)			Affiliate	Youth (5 – 17)	
<b>Aquatic Benefits</b>									
Access to RSYS Stand-up Paddle Boards (SUPs)	√	√	√	√	√	√	√		
Access to RSYS Laser and Elliott 7s fleets	√*+	√*+	√*+	√*+	√*+	√*+	√*+	√*+	√*+
Access to Waterfront Jib Cranes	√+	√+	√+	√+	√+	√+	√+		
Access to Club Tender Service	√*	√*	√*	√*	√*	√*	√*		
Participate in RSYS Sailing Academy programs and courses	√	√	√	√	√	√	√	√	√
Eligible for international regatta participation support	√^	√^	√^	√^	√^	√^	√^	√^	√^
Australian Sailing personal accident insurance	√	√	√	√	√	√	√	√	√
Participate in Volunteer Training	√	√	√	√	√	√	√		

√\* Subject to additional fees

√^ Subject to additional criteria

√+ Induction required



# Membership Benefits

	Metropolitan	Intermediate			Country	Absentee	Family		Youth (5 – 17)
		A (18-24)	B (25-29)	C (30-39)			Affiliate	Youth (5 – 17)	
<b>Aquatic Benefits</b>									
Apply for/occupy a Mooring/Hardstand storage facility space	√*	√*	√*	√*	√*				
Apply for/occupy a dinghy storage space	√*	√*	√*	√*	√*			√*	√*
Apply for/occupy a Waterfront Locker	√*	√*	√*	√*	√*				√*
<b>Social Benefits</b>									
Personalised Member Card and Club Access permissions	√	√	√	√	√	√	√		
Car Park Access (1x Vehicle)	√	√	√	√	√	√	√^		
Invite and sign-in guests to RSYS	√	√	√	√	√	√	√		
Access to private Function Facilities	√	√	√	√	√	√	√		
Access to Club food and beverage outlets	√	√	√	√	√	√	√		

√\* Car park access limited to one (1) vehicle per family at a time



# Membership Benefits

	Metropolitan	Intermediate			Country	Absentee	Family		Youth (5 –17)
		A (18-24)	B (25-29)	C (30-39)			Affiliate	Youth (5 –17)	
<b>Social Benefits</b>									
Access to Club food and beverage outlets	√	√	√	√	√	√	√		
Eligible for Letter of Introduction to visit Reciprocal Clubs	√	√	√	√	√	√	√		
Access to accommodation facilities for family and friends	√	√	√	√	√	√	√		
Access to Opening Day festivities	√	√	√	√	√	√	√		
Access to year-round Club social activities	√	√	√	√	√	√	√		
<b>Financial Benefits</b>									
House account credit privileges (Direct Debit facility)	√	√	√	√	√	√	√		
Pay annual subscription in monthly instalments (Direct Debit facility)	√	√	√	√	√	√	√		
Entrance Fee equal to one (1) year subscription fee	√	√	√	√	√	√			

√\* Subject to additional fees





# Membership Benefits

	Metropolitan	Intermediate			Country	Absentee	Family		Youth (5 –17)
		A (18-24)	B (25-29)	C (30-3)			Affiliate	Youth (5 –17)	
<b>Club Opportunities</b>									
Propose/second a candidate for membership	√	√	√	√	√	√	√		
Propose/second any member for Life membership	√	√	√	√	√	√			
Referee support of a membership application	√	√	√	√	√	√	√		
Volunteer with our specialist race management and support teams	√	√	√	√	√	√	√		
Attend AGM meetings	√	√	√	√	√	√	√		
Voting rights at AGM	√	√	√	√	√	√			
Stand for election to General Committee	√		√	√	√	√			
Stand for election to Election Committee	√	√	√	√	√	√			